

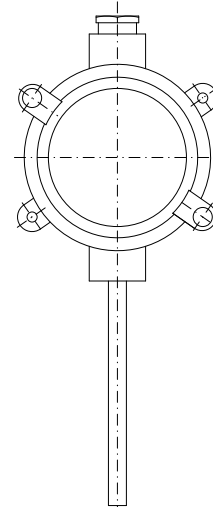
#### FRODE PEDERSEN

#### Application

- Measurement of temperature in rooms f. inst. refrigeration, freeze and cargo stores, specially onboard ships
- The operating range is from -40 to 80°C
- Fields of application
  - Marine sector

#### Technical features

- Pt100 resistance thermometer acc. to IEC 751
- 3-wire configuration is standard
- Wall -mounting
- Solid construction with high resistance against vibration acc. to IEC 68-2-6
- Type approved by classification societies (see page 2)



#### Ordering

The requested sensor is selected from the table below  
The colour code means:

- Standard: Built of standard modules (short delivery time)
- Variant: Modified standard modules
- Special: Special versions and materials. We are specialist in temperature measurement. Please contact us and we will do our utmost to solve your specific measuring task

#### Ordering information

<b>Specification number</b>	<b>1804-</b>	<b>Sensor</b>
-----------------------------	--------------	---------------

#### Type

RM 2 Degree of protection IP 67 ..... 0

#### Connection. Wiring configuration

- 0 ..... 3-wire (only 1xPt100)
- 1 ..... 4-wire (only 1xPt100)
- 2 ..... 2-wire (allways for 2xPt100)

#### Measuring range

-40 +80°C ..... 0

#### Tolerance acc. to IEC 751

- 0 ..... Class B, i.e.  $\pm (0.3^\circ\text{C} + 0.005 \times t_{\text{actual}})^\circ\text{C}$
- 1 ..... Class A, i.e.  $\pm (0.15^\circ\text{C} + 0.002 \times t_{\text{actual}})^\circ\text{C}$
- 2 ..... 1/3 Class B @ 0°C, i.e.  $\pm (0.10^\circ\text{C} + 0.005 \times t_{\text{actual}})^\circ\text{C}$
- 3 ..... 1/6 Class B @ 0°C, i.e.  $\pm (0.05^\circ\text{C} + 0.005 \times t_{\text{actual}})^\circ\text{C}$
- s ..... Special:

#### Resistance value (ohm) acc. to IEC 751

1xPt100 ..... 0  
 2xPt100 ..... 1

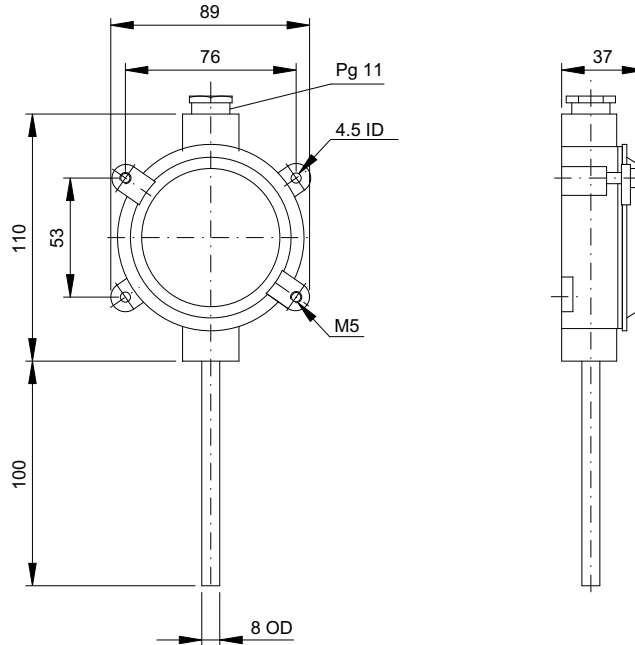
#### Accessories

#### Customer information

Name:  
Tel.:

Dimensions

RM 2



Enclosure

Connection box in silumin, grey. Degree of protection: IP67

Type Approvals

- Lloyd's Register of Shipping

Response time

Protective tube	Response time in seconds (guidelines)	
	In air @ 3m/sec.	
	t <sub>0.5</sub>	t <sub>0.9</sub>
8 OD	60	190

Note:

The 0.5/0.9 time is the time that it takes the sensor to reach 50%/90% of the final value of a temperature change of a medium.

If media and velocity are different from the ones stated, the time can change significantly.

Connection diagram

