

Application

- Measurement of temperature in cold and wet areas f.inst. in cargo rooms, in refrigeration and fishing ships, reservoirs and containers
- The operating range is from -40 to 70°C
- Fields of application
 - Marine sector
 - Refrigeration industry

Technical features

- Pt100 resistance thermometer acc. to IEC 751
- 3-wire configuration is standard
- The protective tube (brass) have an outer rubber jacket vulcanized together with the cable (water tight construction)
- Solid construction with high resistance against vibration acc. to IEC 68-2-6
- Type approved by classification societies (see page 2)

Ordering

The requested sensor is selected from the table below
The colour code means:

- Standard: Built of standard modules (short delivery time)
- Variant: Modified standard modules
- Special: Special versions and materials. We are specialist in temperature measurement. Please contact us and we will do our utmost to solve your specific measuring task

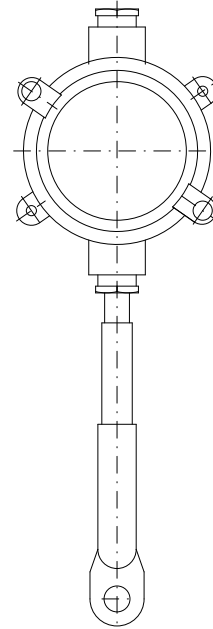


Fig. 1

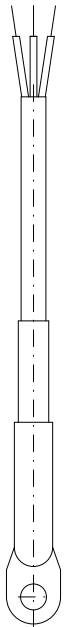


Fig. 2

Ordering information

Sensor

Specification number	1806-										
Type											Cable length (meter)
Fig. 1 With cable and connection box.....	0								1	2	12 meter
Fig. 2 With cable and flying leads.....	1								x	x	Special (Min. 1m)
Special:.....	s										
											Cable type
									0		1,5mm ² . Rubber cable
									s		Special:
Protective tube											
Metal tube, vulcanized											
17mm OD: Length: 174mm.....	0										
											Connection. Wiring configuration
									0		3-wire (only 1xPt100)
									1		4-wire (only 1xPt100)
									2		2-wire (allways for 2xPt100)
Measuring range											
-40 +70°C.....	0										
Special:.....	s										
											Tolerance acc. to IEC 751
									0		Class B, i.e. ± (0.3°C + 0.005 x t _{actual})°C
									1		Class A, i.e. ± (0.15°C + 0.002 x t _{actual})°C
									2		1/3 Class B @ 0°C, i.e. ± (0.10°C + 0.005 x t _{actual})°C
									3		1/6 Class B @ 0°C, i.e. ± (0.05°C + 0.005 x t _{actual})°C
									s		Special
Resistance value (ohm) acc. to IEC 751											
1xPt100.....	0										
2xPt100.....	1										
Special:.....	s										

Accessories

Customer information

Name:
Tel.:

Dimensions

Fig. 1

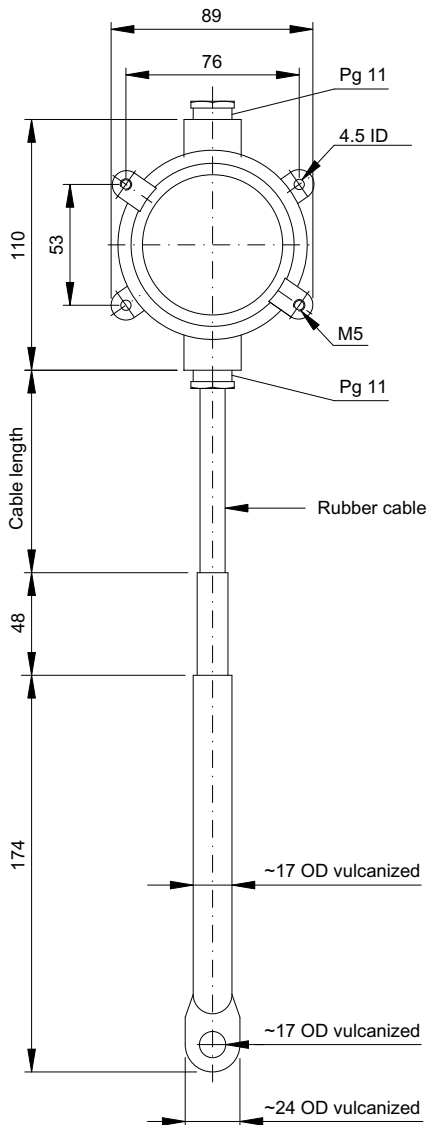
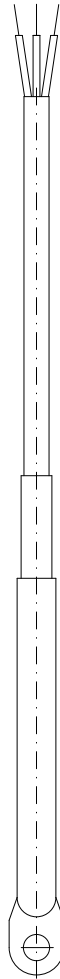


Fig. 2



Enclosure

Connection box in silumin, grey. Degree of protection: IP67

Type Approvals

- Lloyd's Register of Shipping

Response time

Sheath diameter	Response time in seconds (guidelines)	
	In water @ 0.2m/sec	
	$t_{0.5}$	$t_{0.9}$
17 OD vulcanized	45	135

Note:

The 0.5/0.9 time is the time that it takes the sensor to reach 50%/90% of the final value of a temperature change of a medium.

If media and velocity are different from the ones stated, the time can change significantly.

Connection diagram

